

## PROPERTIES

### Full Grain

European Bovine Hides

Thickness - 1.1 / 1.3 mm

Hides size - 4-4.5 sq.mtrs

### Full Grain

Dry Cycle - 500c

Wet Cycle - 250c

### Physical Properties

Flexible Endurance - > 50,000 cycles

Finish Adhesion - > = 2

Tear strength < = 20

Burning behaviour < = 100

Cold cracking 15c


### Flamability Properties


Complies to


EN1021 - 1/2 (Furniture)


DIN 75200 (Furniture)


## LEATHER CARE


 Avoid placing leather in direct sun

 Keep the leather away from direct heat

 Dust regularly with soft & dry cloth

 Clean spots with damp cloth & mild soap

 Dry immediately after the treatment

 Do not rub. use a circular motion towards the centre of the stain

## BAB LEATHER PRODUCTS INTL

### FACTORY

BAB Leather #162 & 163, SIDCO  
Industrial Estate, Thirumudivakkam,  
Chennai - 600044, Tamil Nadu, India.

### CHENNAI

#43, AMICI building, Kasturi Rangan  
Road, Alwarpet, Chennai - 600018,  
Tamil Nadu, India.

### HYDERABAD

SVS Tower, 3rd Floor, 8-2-293/82/  
L/294 A, Road No. 92, MLA Colony,  
Banjara Hills, Hyderabad - 500034,  
Telangana, India.

# Tuscana

---

Tuscana is a cow hides with thickness of 1.1 - 1.3mm. It is chrome tanned with small pebbles, corrected grain and pure aniline dyed finish. The average size of Tuscana leather is 4 - 4.5 sq.mtrs.



TU01



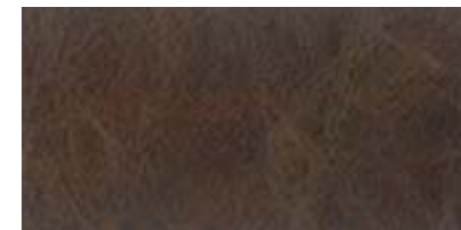
TU02



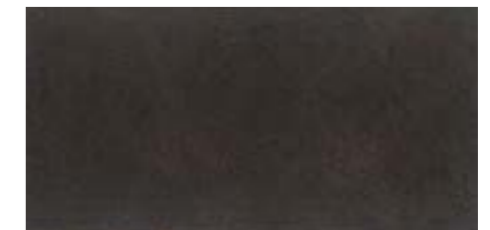
TU03



TU04



TU05



TU06



TU07



TU08

